

Recycled Products

We have a large range of recycled products available from our Clarendon or South Windsor yard. Below is a list of the products we offer with the price per tonne. Please call to confirm availability of products. Other products and discounts for bulk orders are available, please call for a quote and ask about delivery rates or as required.



**40 - 70mm Aggregate
Concrete**
Price on Application



30 - 40mm Aggregate
\$20.00 / tonne



20mm - 30mm Aggregate
\$20.00 / tonne



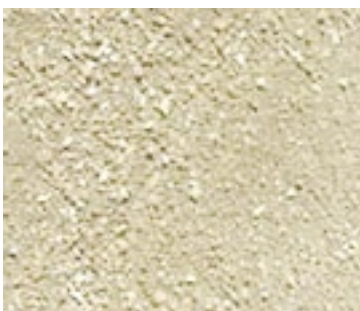
20mm Minus Crushed Concrete
\$18.00 / tonne



10mm Aggregate
\$24.00 / tonne



**Crusher Sand - 6mm Bedding
Sand**
\$15.00 / tonne



Screened Natural Sand
Produced upon request
from \$20.00 / tonne



Soil Blend
Turf Underlay Screened
\$18.00 / tonne